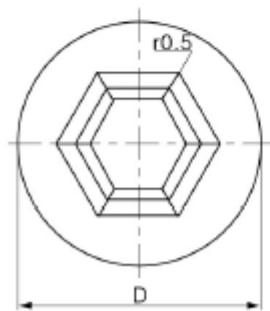
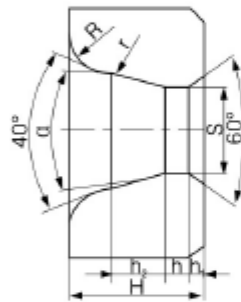
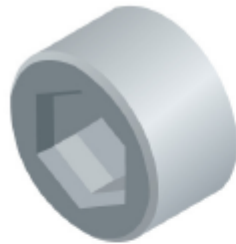




RİTEK TEKNİK HIRDAVAT

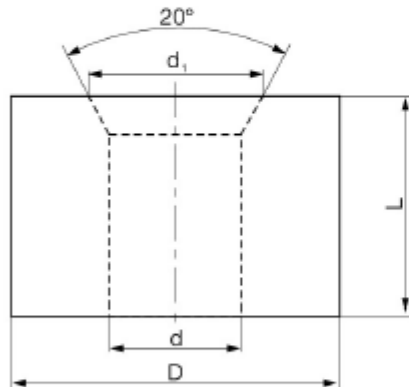
0312 385 57 53



六方形型材拉伸模 S60 型
Hexagonal proximate matter stretching die

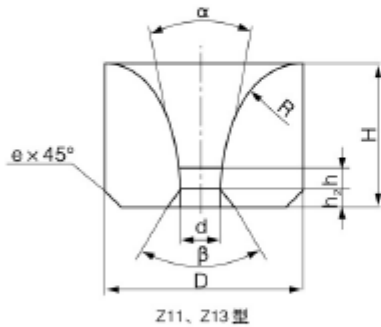
六方形型材拉伸模 S60 型
Hexagonal proximate matter stretching die S60 type

Type	Dimension (mm)		
	D	H	S
S60-2.5	30.0	21.0	2.5
S60-3	30.0	21.0	3.0
S60-4	30.0	21.0	4.0
S60-4.7	30.0	21.0	4.7
S60-5.7	30.0	21.0	5.7
S60-6.7	30.0	21.0	6.7
S60-7.7	30.0	21.0	7.7
S60-8.7	35.0	21.0	8.7
S60-9.7	35.0	21.0	9.7
S60-10	35.0	25.0	10.6
S60-11	40.0	25.0	11.5
S60-12	40.0	25.0	12.5
S60-13	45.0	25.0	13.5
S60-14	45.0	25.0	14.5
S60-15	45.0	25.0	15.5
S60-16	45.0	25.0	16.5
S60-17	45.0	25.0	17.5
S60-18	45.0	25.0	18.5
S60-19	55.0	28.0	19.5
S60-20	55.0	28.0	20.5
S60-21	55.0	28.0	21.5
S60-22	60.0	28.0	22.5
S60-23	65.0	30.0	23.5
S60-24	65.0	30.0	24.5
S60-25	65.0	30.0	25.5
S60-26	65.0	30.0	26.5
S60-27	65.0	30.0	27.5
S60-28	70.0	35.0	28.5
S60-29	70.0	35.0	29.5
S60-30	70.0	35.0	30.5
S60-31	70.0	35.0	31.3
S60-32	70.0	35.0	32.3
S60-33	80.0	35.0	33.3
S60-34	80.0	35.0	34.3
S60-35	80.0	35.0	35.3
S60-36-80	80.0	35.0	36.3
S60-37-90	80.0	35.0	37.3
S60-36	85.0	35.0	36.3
S60-37	85.0	35.0	37.3
S60-38-85	85.0	35.0	38.3
S60-39-85	85.0	35.0	39.3
S60-41-85	85.0	35.0	41.0
S60-38	90.0	35.0	38.3
S60-39	90.0	35.0	39.3
S60-41	90.0	35.0	41.0
S60-42-90	90.0	35.0	42.0
S60-44-90	90.0	35.0	44.0
S60-47-90	90.0	35.0	47.0
S60-42	100.0	40.0	42.0
S60-44	100.0	40.0	44.0



As sintered hardmetal blanks used in reducing dies for standard bolt

Type	Dimension (mm)				
	d	D	L	d1	适用范围
BS0211415	2.1	14.0	15.0	2.5	M3
BS0211430	2.1	14.0	30.0	2.5	M3
BS0211630	2.1	16.0	30.0	2.5	M3
BS0311415	3.1	14.0	15.0	3.5	M4
BS0311430	3.1	14.0	30.0	3.5	M4
BS0311615	3.1	16.0	15.0	3.5	M4
BS0311630	3.1	16.0	30.0	3.5	M4
BS0391415	3.9	14.0	15.0	4.5	M5
BS0391420	3.9	14.0	20.0	4.5	M5
BS0391435	3.9	14.0	35.0	4.5	M5
BS0391615	3.9	16.0	15.0	4.5	M5
BS0391620	3.9	16.0	20.0	4.5	M5
BS0391635	3.9	16.0	35.0	4.5	M5
BS0471615	4.7	16.0	15.0	5.4	M6
BS0471635	4.7	16.0	35.0	5.4	M6
BS0471820	4.7	18.0	20.0	5.4	M6
BS0471835	4.7	18.0	35.0	5.4	M6
BS0652020	6.5	20.0	20.0	7.2	M8
BS0652042	6.5	20.0	42.0	7.2	M8
BS0652220	6.5	22.0	20.0	7.2	M8
BS0652242	6.5	22.0	42.0	7.2	M8
BS0842625	8.4	26.0	25.0	9.3	M10
BS0842554	8.4	26.0	54.0	9.3	M10
BS0843025	8.4	30.0	25.0	9.3	M10
BS0843040	8.4	30.0	40.0	9.3	M10
BS0843054	8.4	30.0	54.0	9.3	M10
BS1022825	10.2	28.0	25.0	11.4	M12
BS1022854	10.2	28.0	54.0	11.4	M12
BS1023025	10.2	30.0	25.0	11.4	M12
BS1023054	10.2	30.0	54.0	11.4	M12
BS1194030	11.9	40.0	30.0	13.2	M14
BS1194040	11.9	40.0	40.0	13.2	M14
BS1404030	14.0	40.0	30.0	15.4	M16
BS1404035	14.0	40.0	35.0	15.4	M16
BS1404040	14.0	40.0	40.0	15.4	M16
BS1754530	17.5	45.0	30.0	19.3	M20



→ 新孔型拉丝模 Z11、Z13 型
New pass wire drawing die Z11、Z13 type

Type	Dimension (mm)		
	D	H	d
Z11-0.4	8.0	6.0	0.4
Z11-0.6	8.0	6.0	0.6
Z11-0.8	8.0	6.0	0.8
Z11-1.0	8.0	6.0	1.0
Z11-0.6-12	12.0	10.0	0.6
Z11-0.8-12	12.0	10.0	0.8
Z11-1.0-12	12.0	10.0	1.0
Z11-1.2-12	12.0	10.0	1.2
Z11-1.4-12	12.0	10.0	1.4
Z11-1.6-12	12.0	10.0	1.6
Z11-1.8-12	12.0	10.0	1.8
Z11-2.0-12	12.0	10.0	2.0
Z11-2.3-12	12.0	10.0	2.3
Z11-1.0-15	15.0	13.0	1.0
Z11-1.3-15	15.0	13.0	1.3
Z11-1.8-15	15.0	13.0	1.8
Z11-2.3-15	15.0	13.0	2.3
Z11-2.8-15	15.0	13.0	2.8
Z11-2.3-19	19.0	17.0	2.3
Z11-2.8-19	19.0	17.0	2.8
Z11-3.3-19	19.0	17.0	3.3
Z11-3.8-19	19.0	17.0	3.8
Z11-4.2-19	19.0	17.0	4.2
Z11-4.7-19	19.0	17.0	4.7
Z11-5.2-19	20.0	17.0	5.2
Z11-5.7-19	21.0	17.0	5.7
Z13-5.7	28.0	20.0	5.7
Z13-6.5	28.0	20.0	6.3
Z13-6.7	28.0	20.0	6.7

OSB Ostim Mah. 100.Yil Bulvarı Bosna İş Merkezi No:35/78 Ostim/ANKARA
Tel/Faks : 0312 385 57 53